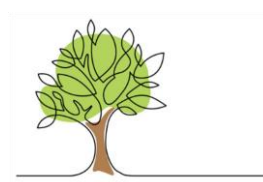




COMMUNITY ENGAGEMENT –
at the heart of a successfully
adopted Neighbourhood
Development Plan



**Sherburn
Neighbourhood
Development Plan**

STEP 3: How will we engage:

- (1) The Council are creating a NDP Steering Group Committee (initially by invitation, local community groups etc)
- (2) Social media posts
- (3) Leaflet drops and publicity materials
- (4) Community engagement events
- (5) Regular updates at Town Council meetings
- (6) Information shared on our website and notice boards
- (7) Public consultation – questionnaires to seek views and opinions of local residents

In order to make the process as open and transparent as possible and to ensure wide community involvement, we will begin with publicity and awareness-raising activities, to let people know that a neighbourhood plan is proposed. The aim should be to make sure that everyone knows about the plan and has an opportunity to participate. This will include residents' views on community facilities and open spaces, local businesses and community groups.

A GOOD NEIGHBOURHOOD DEVELOPMENT PLAN WILL:

- Be supported by local people
- Demonstrate that local people have had the opportunity to influence the content of the plan
- Demonstrate good local engagement
- Establish a vision for the area
- Include general policies for the development and use of land
- Bring forward sites for development (potentially Sherburn wouldn't have to do this in light of the exponential growth in residential development in recent years)
- Set out planning policies for the neighbourhood area
- Be written by the local community
- Ensure the community gets the right types of development, in the right place

CALLING ALL COMMUNITY STAKEHOLDERS & INTERESTED RESIDENTS

We want to hear from YOU

If you are interested in shaping and influencing the future of your town, please contact Georgina (Finance Officer) at rfo@sherburninelmet-tc.gov.uk or Gaynor (Deputy Clerk) at clerk@sherburninelmet-tc.gov.uk to register your interest or call the office for an informal chat on 01977681024.

STEP 1:

Sherburn TC resolved in their 2023 budget to work towards adoption of a NDP.

What is a Neighbourhood Plan?

A Neighbourhood plan is a document that sets out planning policies for your area and can:

- ✓ Protect local green spaces;
- ✓ Encourage better designed places;
- ✓ Bring forward housing that genuinely meets local needs.

It is written by the local community and helps get the right types of development, in the right place.

STEP 2:

What is a designated Neighbourhood area?

For town or parish councils, there is a presumption that this area will be the same as the parish boundary.

However, they may choose a smaller and more focused area, such as a town centre.

Once the area has been identified and approved by the town council, it will need to be submitted to the local planning authority for designation.

Sherburn Town Council submitted their identified area for designation by North Yorkshire Council in January 2024.